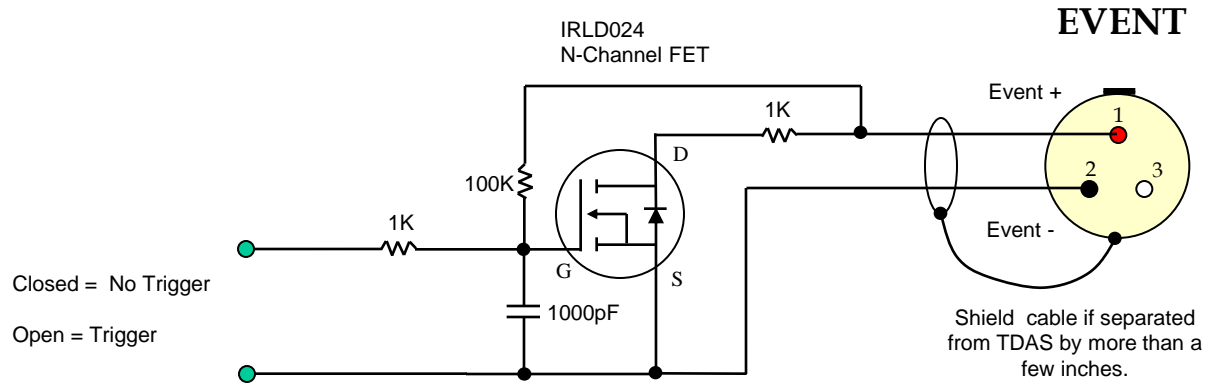
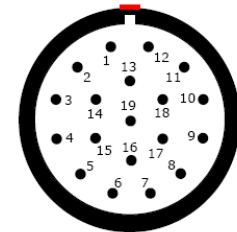


Event Conversion Circuit for TDAS PRO Rack or G5 Docking Station

Contact Normally Closed
Contact Open = Trigger



19-pin COM Connectors
(EEG.2B.319.CLL)



(panel view)

Suggested cable connector P/N:
FGG.2B.319.CLADxx

14	Ethernet 1x3 (+)
15	+ Event
16	(-) Common for start record and status inputs
17	Ethernet Rx2 (-)
18	Ethernet Rx2 (+)
19	- Event