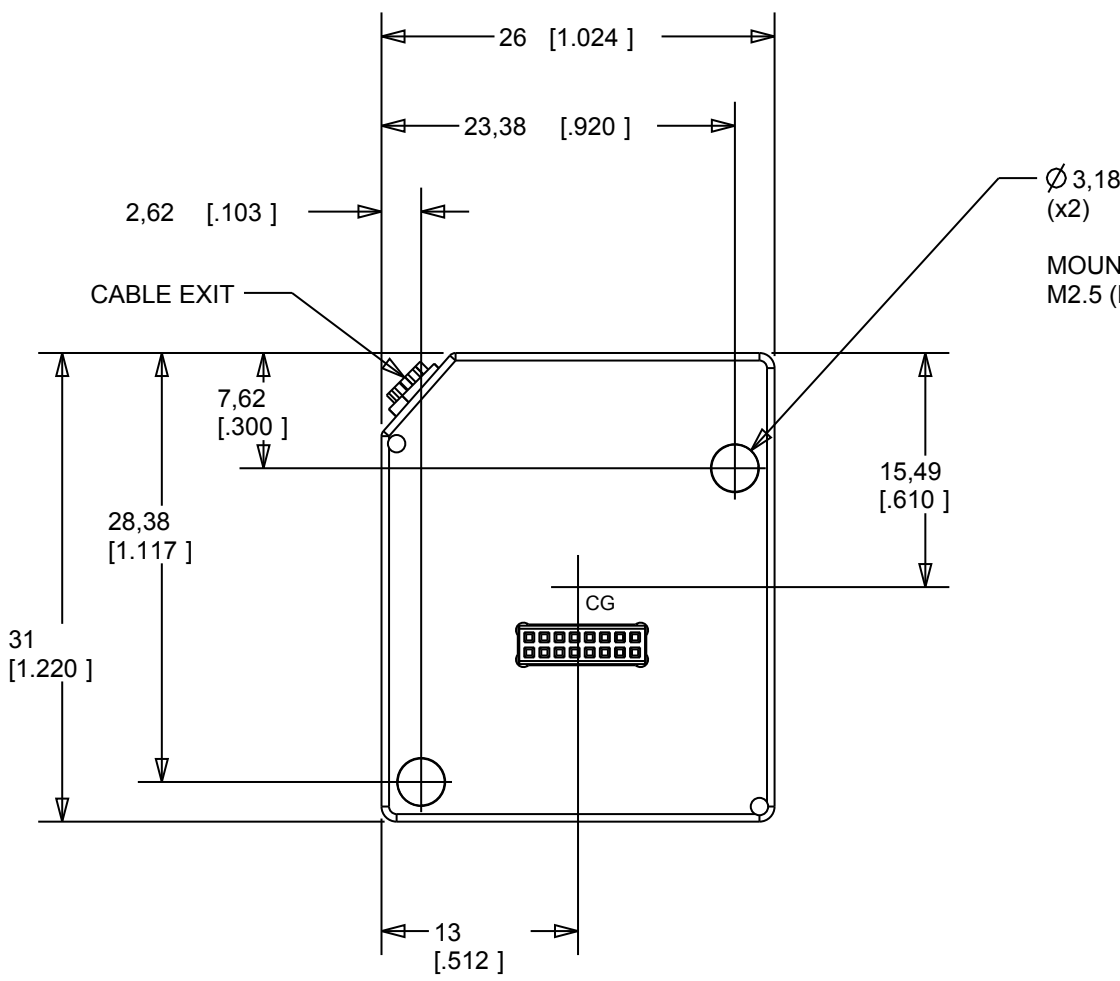
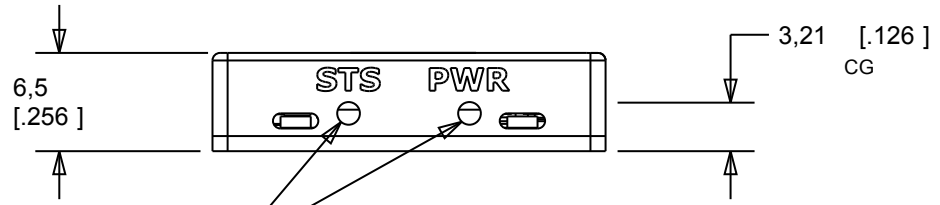
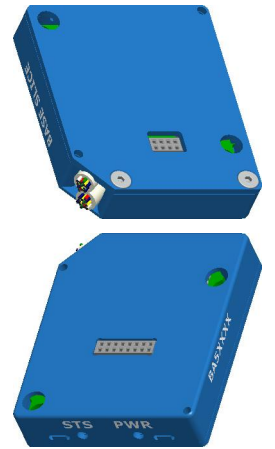
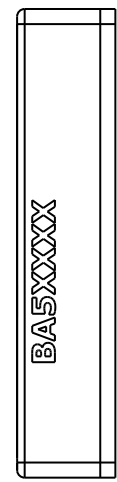


REVISIONS			
REV	DESCRIPTION	DATE	APPR




Ø 3,18 [.125]
(x2)
MOUNTING THRU HOLES FOR:
M2.5 (LOOSE FIT) 4-40 (FREE FIT) M3 (TIGHT FIT)



STATUS & POWER LEDS

MM [INCH]
ALL DIMENSIONS ± 0.13 [.005]
CENTER OF GRAVITY ± 2 [.079]
WEIGHT: 10 GRAMS ± 1 GRAMS
(NOTE: NO CABLE ASM INCLUDED)

UNLESS OTHERWISE SPECIFIED DIMENSION ARE IN MM TOLERANCES ARE: DECIMALS: ANGLES: .X ± .25 ± .5° .XX ± .1		 909 ELECTRIC AVE, SUITE 206 SEAL BEACH, CA 90740 562-493-0158	
DO NOT SCALE DRAWING		NAME/DESC: SLICE NANO BASE, MOUNTING DIMENSIONS	
MATERIAL: 6061-T651 ALUMINUM CASE	DRAWING NO: SLICE-M2D-1482	REV: 0	
DRAWN BY: G NEWTON 2-17-10	SIZE: A	SCALE: 2:1	SHEET: 1 OF 1