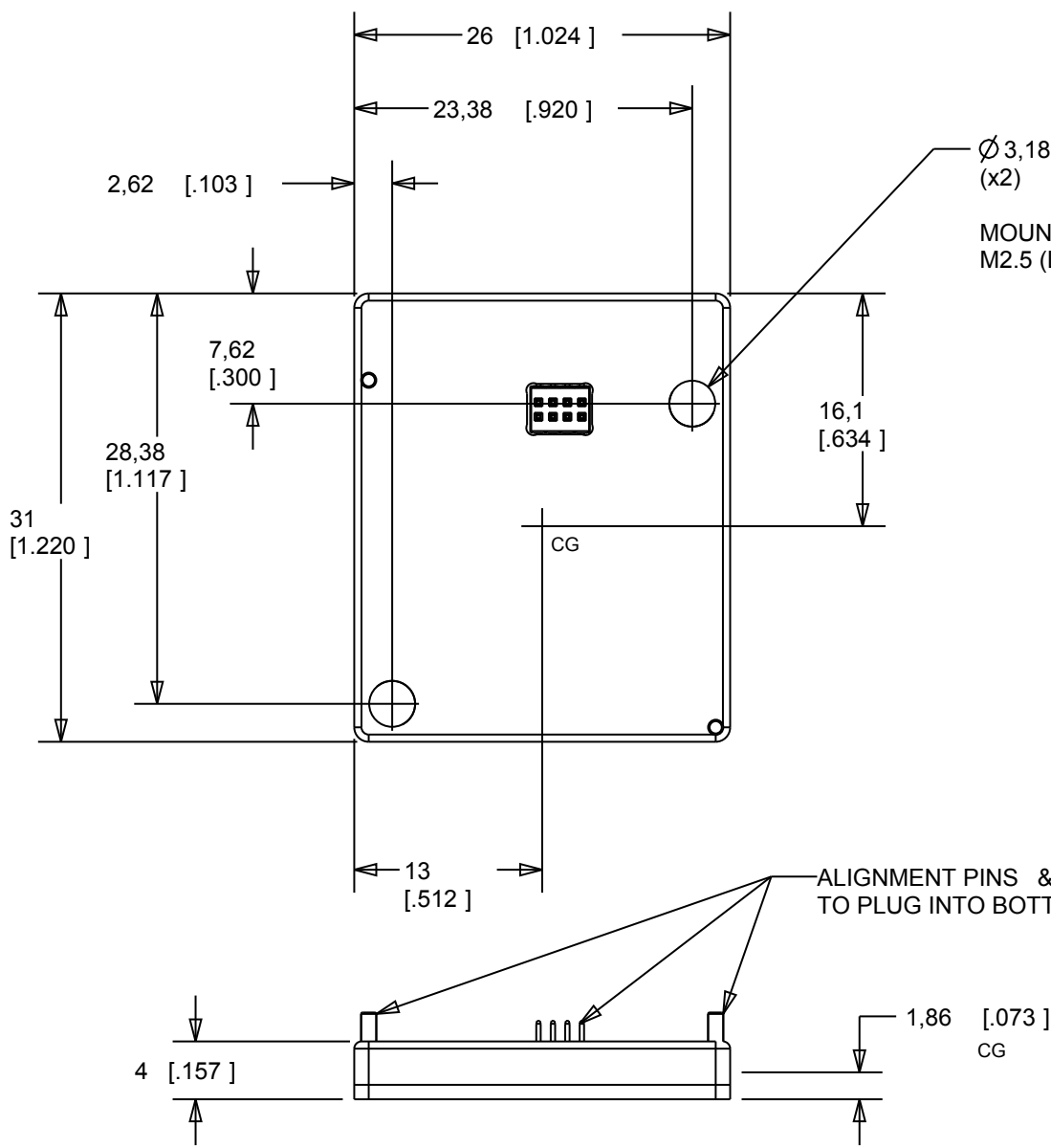
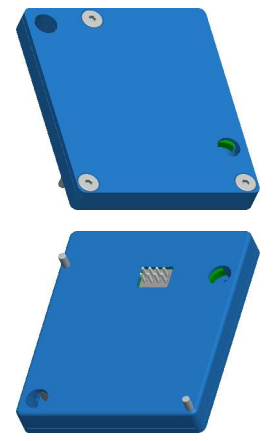
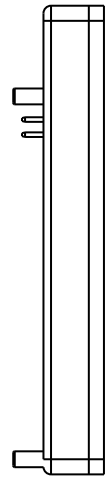



REVISIONS			
REV	DESCRIPTION	DATE	APPR



$\varnothing 3,18$ [.125]
 (x2)
 MOUNTING THRU HOLES FOR:
 M2.5 (LOOSE FIT) 4-40 (FREE FIT) M3 (TIGHT FIT)



MM [INCH]
 ALL DIMENSIONS ± 0.13 [.005]
 CENTER OF GRAVITY ± 1 [.039]
 WEIGHT: 6 GRAMS ± 1 GRAMS

UNLESS OTHERWISE SPECIFIED DIMENSION ARE IN MM TOLERANCES ARE: DECIMALS: ANGLES: .X \pm .25 \pm .5° .XX \pm .1		 909 ELECTRIC AVE, SUITE 206 SEAL BEACH, CA 90740 562-493-0158	
DO NOT SCALE DRAWING		NAME/DESC: SLICE NANO BATTERY, MOUNTING DIMENSIONS	
MATERIAL: 6061-T651 ALUMINUM CASE	DRAWING NO: SLICE-M2D-1481	REV: 0	
DRAWN BY: G NEWTON 2-17-10	SIZE: A	SCALE: 2:1	SHEET: 1 OF 1