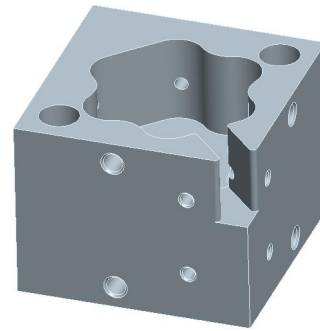
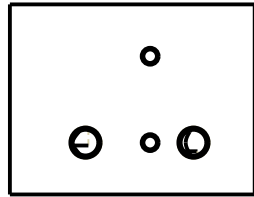
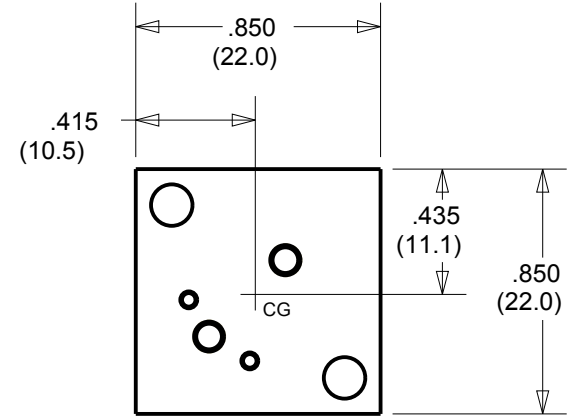
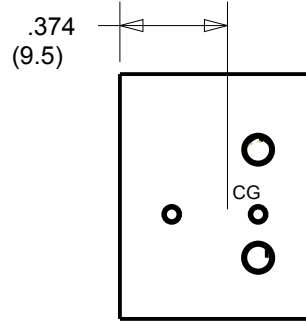
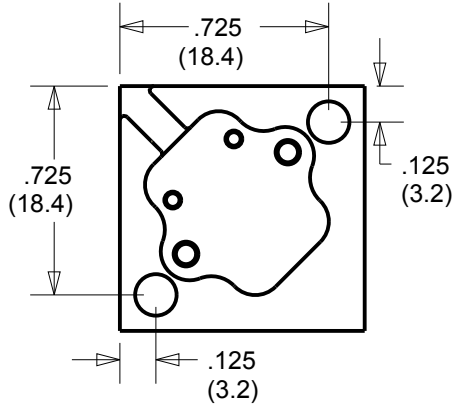
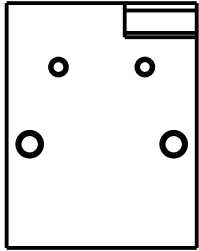
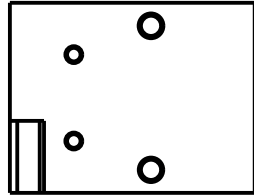


REVISIONS			
REV	DESCRIPTION	DATE	APPR



INCH (MM)

HIDDEN LINES NOT SHOWN

CENTER OF GRAVITY (EMPTY BLOCK): $\pm .02(.51)$


RECOMMENDED SCREWS: #6-32X1IN (M3-0.5X25)

McMASTER PN: 91251A153 (91290A125)

RECOMMENDED TORQUE: 9.6IN-LB ± 2 (.9Nm) DRY (20% LESS IF LUBRICATED)

WEIGHT (EMPTY BLOCK): 15.6 \pm .2 GRAMS

ALL SURFACES MACHINE FLAT TO $\sqrt[32]{\quad}$ AND $\square .0005//.001$

UNLESS OTHERWISE SPECIFIED DIMENSION ARE IN INCHES TOLERANCES ARE: FRACTIONS: DECIMALS: ANGLES: MACHINED: $\pm 1/64$.X \pm .1 $\pm 5^\circ$ 125 .XX \pm .01 XXX \pm .002		 909 ELECTRIC AVE, SUITE 206 SEAL BEACH, CA 90740 562-493-0158	
DO NOT SCALE DRAWING		NAME/DESC: TRIAx BLOCK FOR ARS HG	
MATERIAL: 7075-T651 ALUMINUM	DRAWING NO:	REV: 0	
DRAWN BY: K SHOEMAKER 10-3-11		SIZE: A	SCALE 1.5:1
		SHEET 1 OF 1	