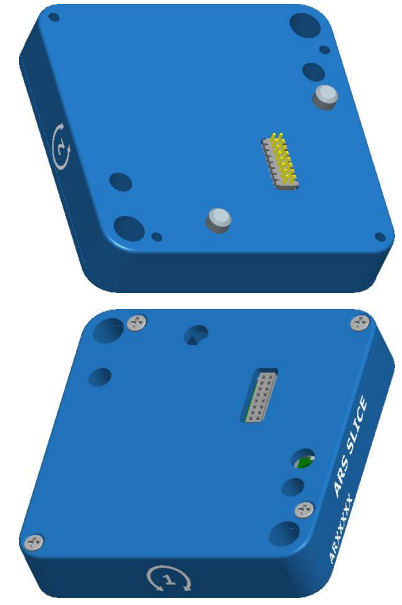
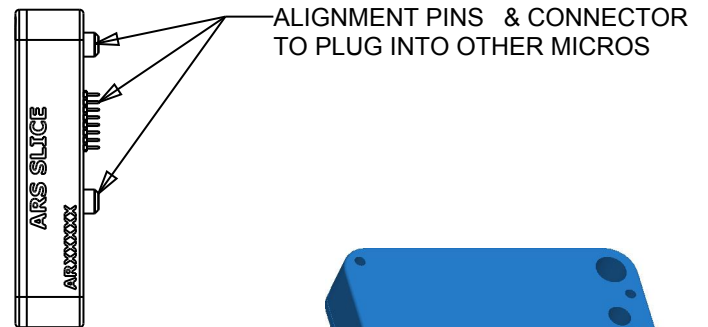
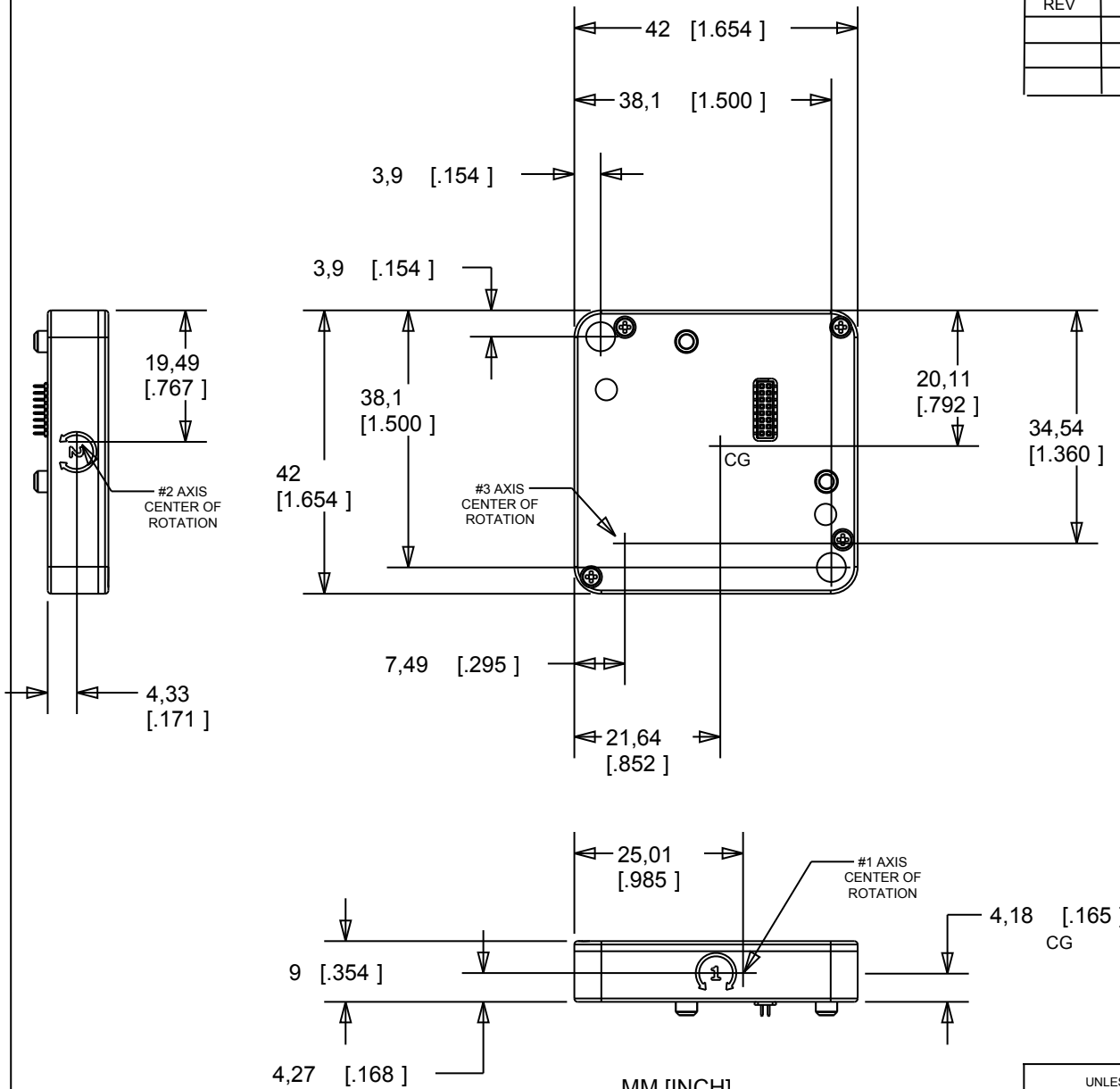



REVISIONS			
REV	DESCRIPTION	DATE	APPR



MM [INCH]
 ALL DIMENSIONS ± 0.13 [.005]
 CENTER OF GRAVITY ± 2 [.079]
 SENSOR AXIS ± 1 [.039]
 WEIGHT: 33 GRAMS ± 4 GRAMS

NOTE: NOT ALL SLICE MICRO ARS SENSORS INTERSECT

UNLESS OTHERWISE SPECIFIED DIMENSION ARE IN MM TOLERANCES ARE: DECIMALS: ANGLES: X $\pm .25$ $\pm .5^\circ$.XX $\pm .1$		 909 ELECTRIC AVE, SUITE 206 SEAL BEACH, CA 90740 562-493-0158	
DO NOT SCALE DRAWING		NAME/DESC: SLICE MICRO ARS, MOUNTING DIMENSIONS	
MATERIAL: 6061-T651 ALUMINUM CASE	DRAWING NO: SLICE-M2D-1479	REV: 0	
DRAWN BY: G NEWTON 2-17-10	SIZE: A	SCALE: 1:1	SHEET: 1 OF 1