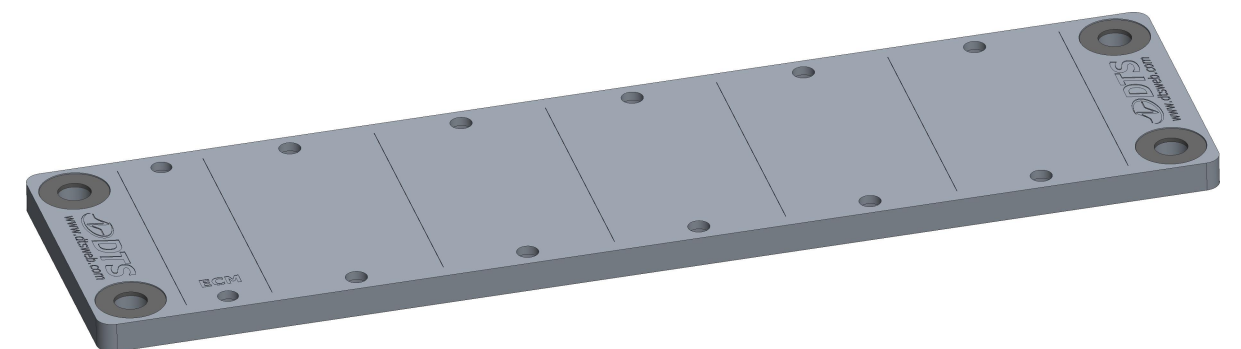
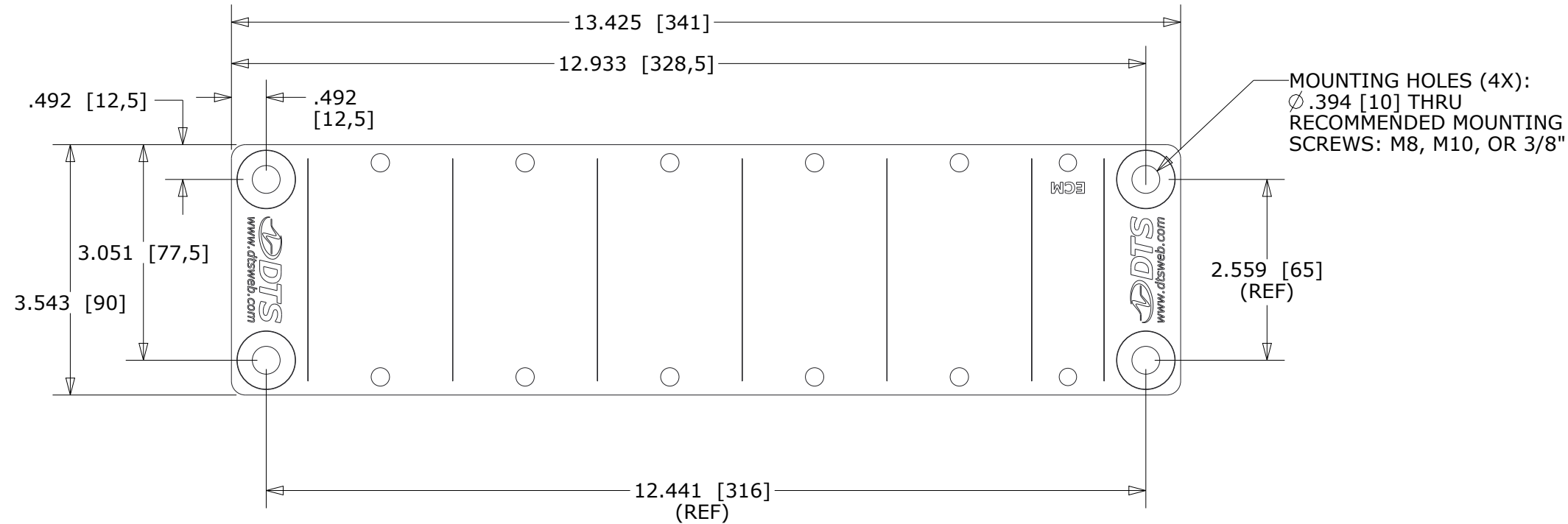
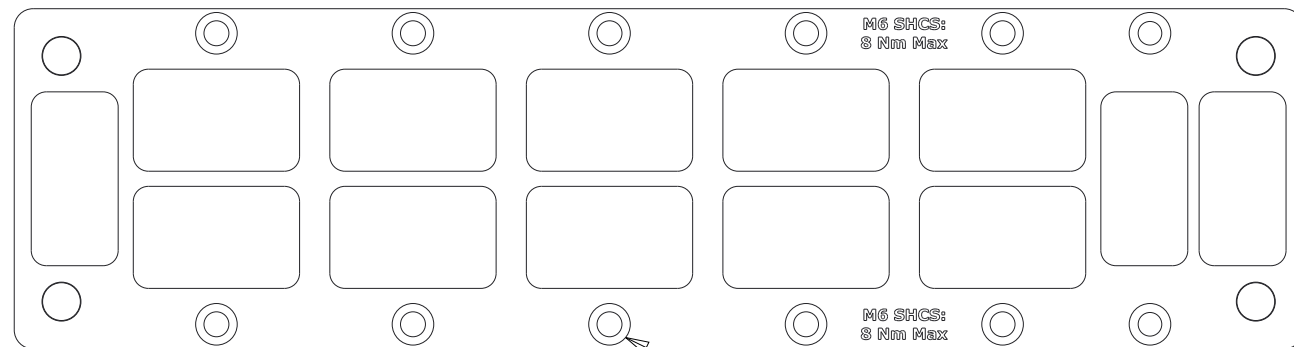
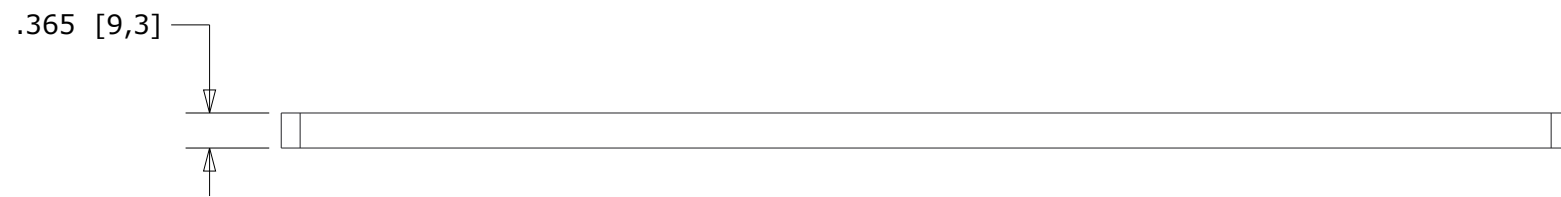


REVISIONS			
REV	DESCRIPTION	DATE	APPR



**WEIGHT: 1.25 LB.  
20.0 OZ.  
566 GRAMS**



**COUNTERBORES FOR MOUNTING SLICE PRO MODULES.  
USE STAINLESS STEEL SHCS, M6 X 1.0, 12 MM LENGTH.  
TIGHTEN SHCS TO 8 Nm MAX.**

**SHIPS WITH STAINLESS STEEL  
WASHERS EMBEDDED IN THE  
MOUNTING HOLE LOCATIONS**

UNLESS OTHERWISE SPECIFIED DIMENSION ARE IN INCHES TOLERANCES ARE: FRACTIONS: DECIMALS: ANGLES: MACHINED: $\pm 1/64$ .X $\pm .1$ $\pm .5^\circ$ 125 .XX $\pm .01$ .XXX $\pm .002$		909 ELECTRIC AVE, SUITE 206 SEAL BEACH, CA 90740 562-493-0158 NAME/DESC:	
DO NOT SCALE DRAWING		SLICE PRO BASIC MOUNTING RACK-6 PIECE (ETHERNET)	
MATERIAL: <b>6061-T651 ALUMINUM</b>	DRAWING NO: <b>13000-40720-TCN</b>	REV: <b>0</b>	
DRAWN BY: <b>J CASEY 1-24-17</b>	SIZE: <b>B</b>	SCALE: <b>1:2</b>	SHEET: <b>1 OF 1</b>